

U.S. All Islands Coral Reef Committee

Report to the U.S. Coral Reef Task Force

Fort Lauderdale, Florida

October 21, 2011

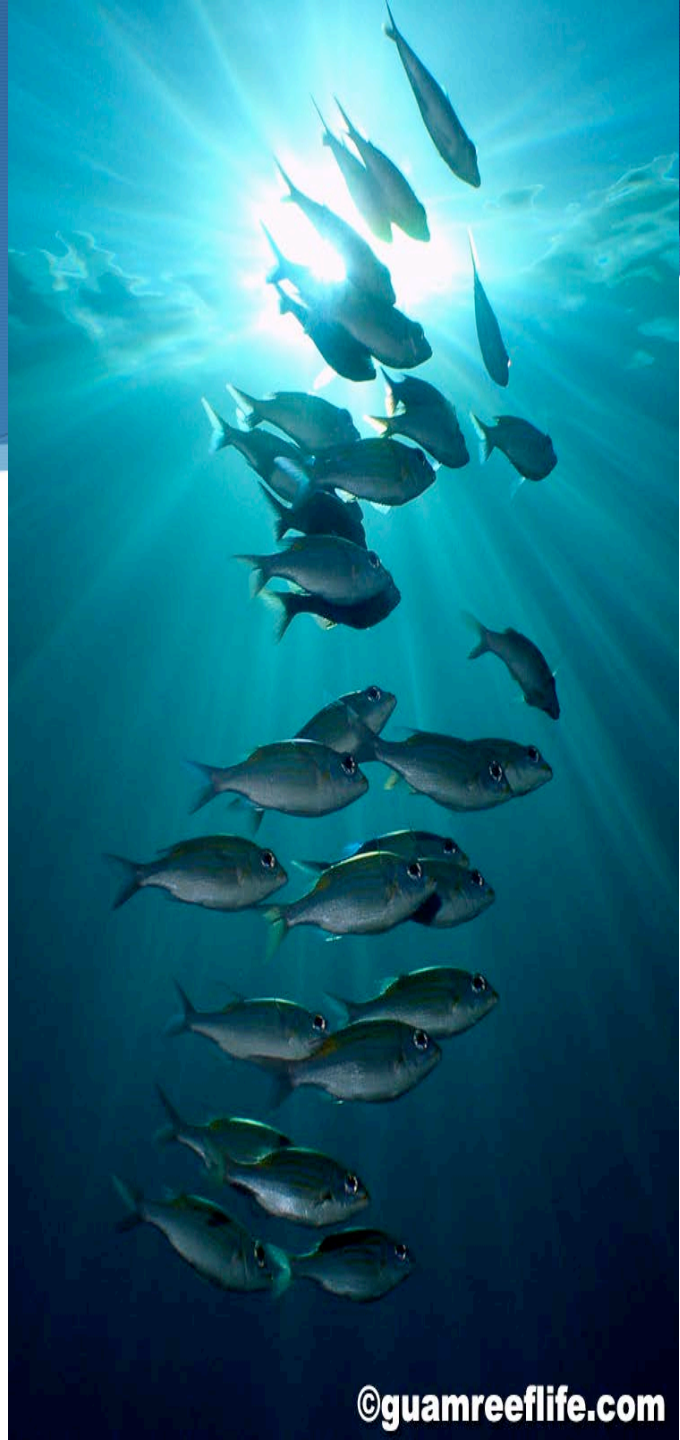
AIC Updates

- ◆ New AIC Members:

- Damaris Delgado, Puerto Rico
- Joseph Artero-Cameron, Guam

- ◆ AIC members elected:

- Fran Castro, Chair
- Paige Rothenberger, Vice Chair



Updates on New Initiatives

- 🟢 National Ocean Council and National CMSP Workshop Update
- 🟢 Micronesia Regional Shark Sanctuary
- 🟢 The Caribbean Challenge
- 🟢 U.S. /Hawaii Bid for 2016 IUCN World Conservation Congress

Outstanding Issues

- ◆ **Natural Disasters Response** - The AIC remains concerned that there is no process in place to deal with responses to support coral reef recovery and resilience following natural disasters

Watershed Restoration Partnership Initiative

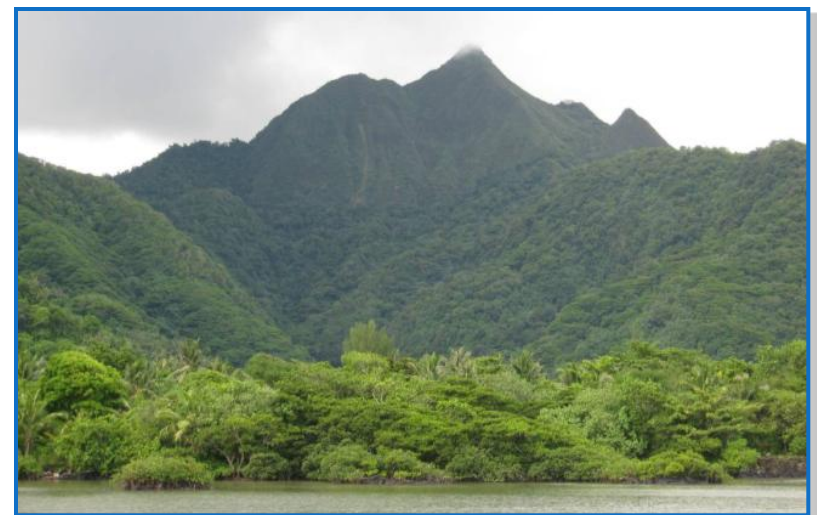
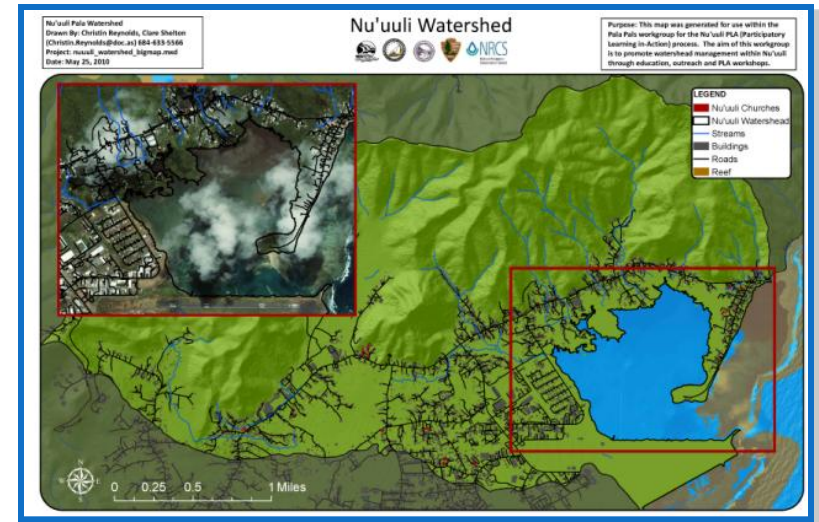
- 💧 The Guánica Bay Watershed Management Plan is the first in a coordinated research and demonstration program to meet the management and conservation objectives of both USDA and NOAA.
- 💧 Initiative expanded to Ka'anapali, West Maui and Nu'uuli Watershed in American Samoa, including Malaeimi and Tafuna

Governor Sunia Summer Scholarships

- Provides a scholarship for 2 undergraduates for a field-based summer internship program at a federal agency, followed by leadership development experience with federal agencies in Washington, D.C.
- Improved program in 2012

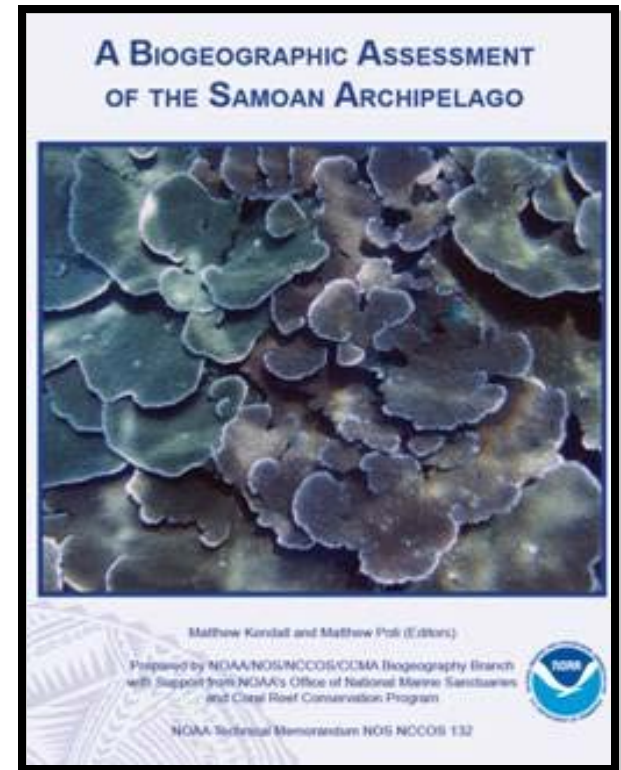
American Samoa

🟢 **Nu'uuli Watershed** (including Malaeimi and Tafuna) selected as the “plus one” watershed for the **USCRTF Partnership Initiative** in the Pacific.



American Samoa

- 🟢 A Biogeographic Assessment of the Samoan Archipelago was completed in July by NOAA, in collaboration with various local agencies and departments.



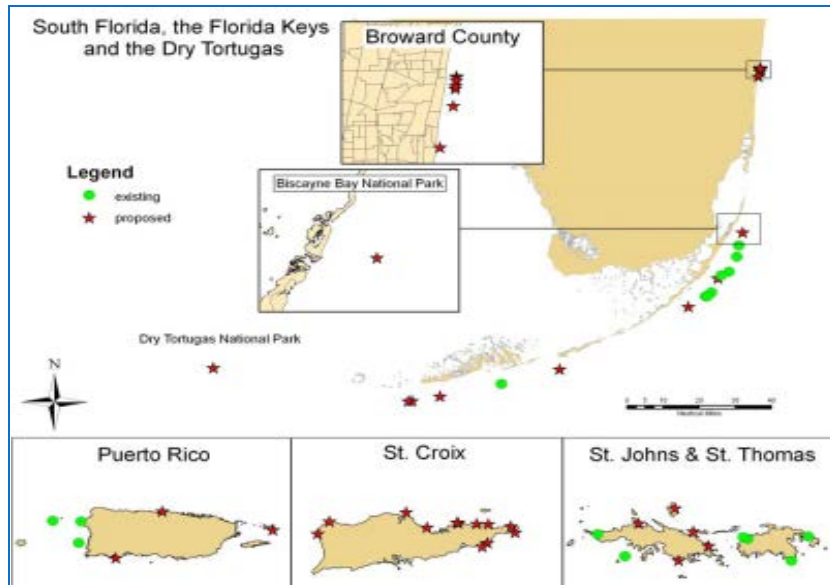
CNMI

- ◆ Coral watch training with support from The Nature Conservancy and NOAA's Pacific Islands Regional
- ◆ Installed the first CREWS (Coral Reef Early Warning Station)/Integrated Coral Observing Network (ICON) station in collaboration with NOAA and PacIOOS.



Florida

◆ This summer the FKNMS Buoy Team focused on maintaining mooring buoys in the Tortugas Ecological Reserve (TER), and installing replacement anchors. The result is 13 new mooring buoys in the TER, and 98% of buoys in-service throughout the Sanctuary.

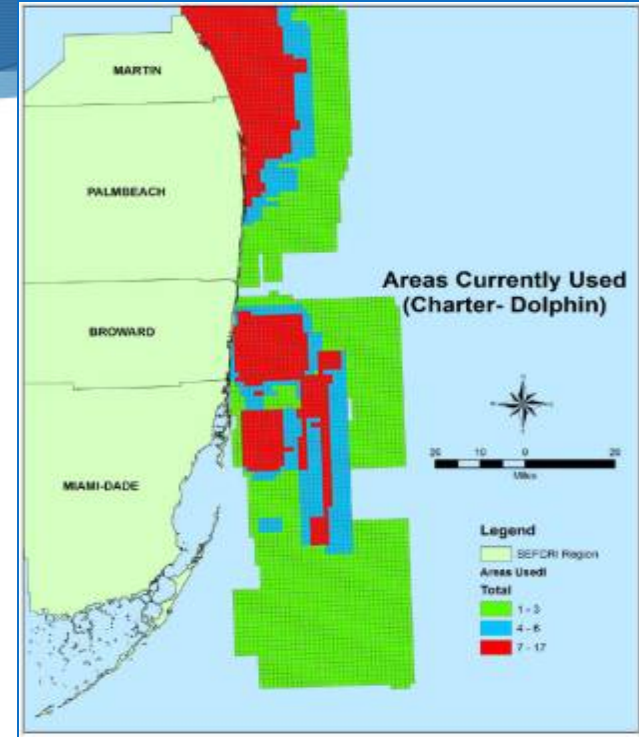


- The Florida Fish and Wildlife Conservation Commission has begun monitoring and mapping *Acroporid* corals throughout the US Atlantic/ Caribbean jurisdictions. Fifty sites have synoptic surveys and quarterly demographic data.

Florida

- ◆ The Southeast Florida Coral Reef Initiative (SEFCRI) is shifting from data collection to developing management alternatives. Data, results, and recommendations from SEFCRI LAS projects will be analyzed using spatial planning tools. Stakeholder Working Groups will apply these data to identify management alternatives for southeast Florida reefs.

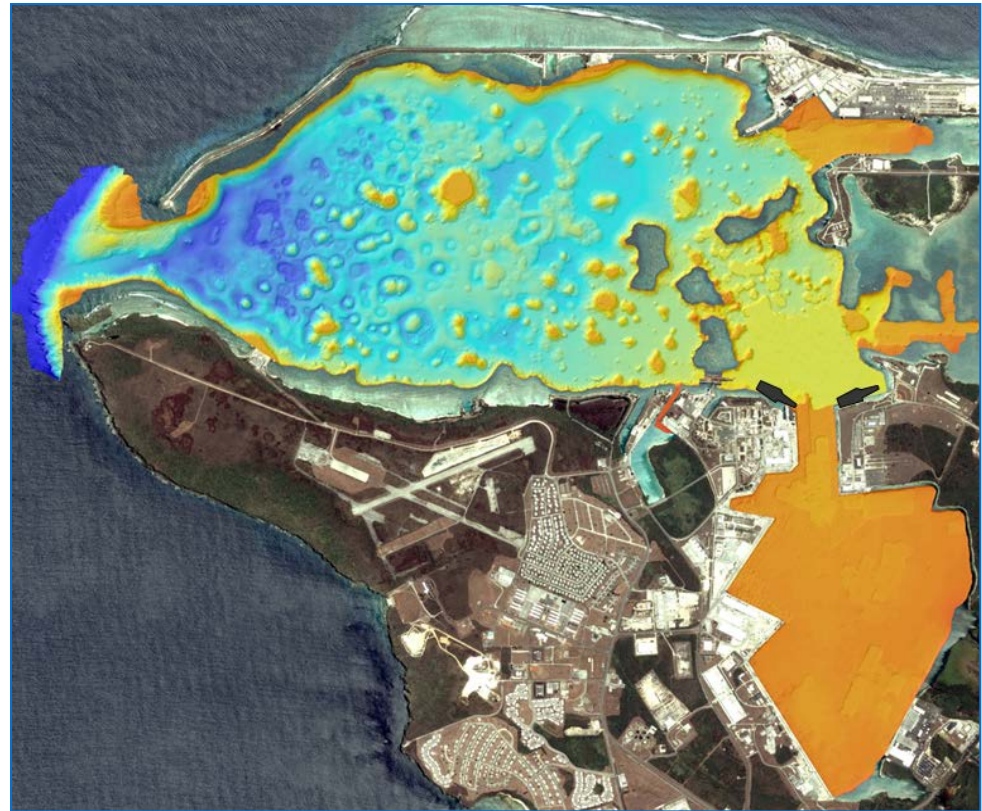
- ◆ A meeting of all SEFCRI Team members was held in September to discuss Team charter revisions, and facilitating the move towards the development of management alternatives.



Guam

Concerned by the pending military build-up risk to coral reef resources.

- direct large scale dredging and the associated mitigation
- increased user impacts (recreational and fisheries impacts)
- stormwater management and terrestrial development.



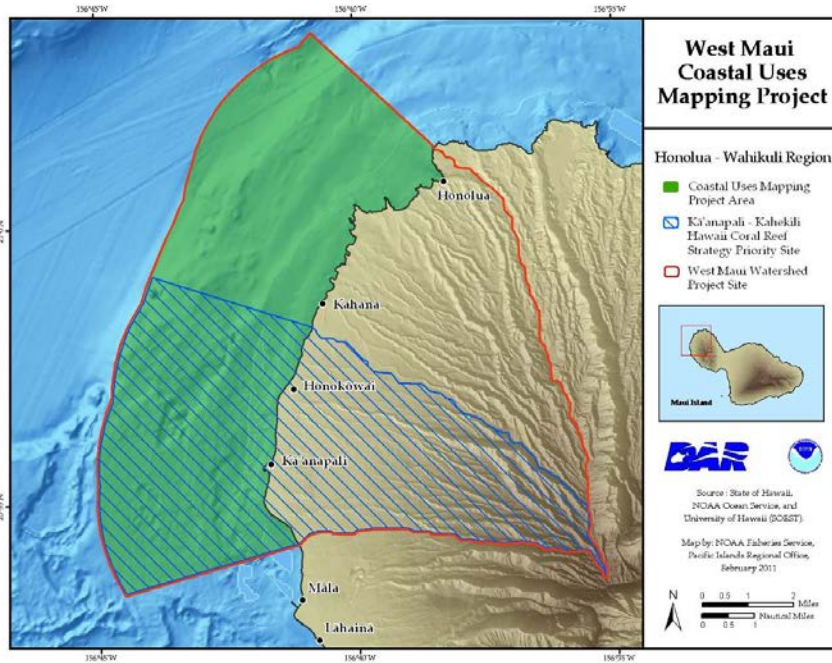
Guam

Guam Watershed and Coastal waters

- Impacts of Land Based Sources of Pollution
- Masso Reservoir Restoration Native Tree Planting Project
- Manell/Geus Conservation Action Plan
- Guam's Micronesia Challenge Strategy
- Invasive Species & the Military Build-up



HAWAII



- ❖ Over 80 participants received hands-on training in tools used to build a coastal/marine spatial framework.
 - Planned in partnership between the WPRFMC, NOAA and the State of Hawaii



- ❖ Completed mapping of the spatial range and intensity of key human coastal and nearshore ocean uses in Maui priority management site.
 - Gather ocean uses data from local resource users, scientists, and stakeholders using participatory GIS methods.
 - Data will be used for the upcoming West Maui Watershed Plan

HAWAII



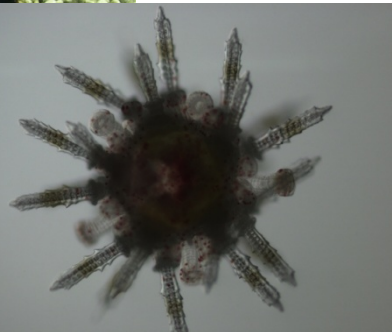
❖ Implementation of a best management project (BMP) on the island of Hawaii through the LBSP-LAS.

- Fencing will be installed to protect the critical riparian corridor around the streams in the upper Waiulaula watershed. Project to begin in



❖ Continued use of mechanical removal suction devices (“Super Sucker”) in conjunction with sea urchin bio-control experiments to control alien algae on coral reefs in Kaneohe Bay

- Since initial addition of urchins in January 2011, the algal coverage decreased from 28% to 10% when more urchins were added.



Puerto Rico

Guánica Watershed Management

- ◆ Efforts towards restoring the Guánica Lagoon are being conducted.
- ◆ NOAA efforts:
 - funded watershed coordinator
 - coral reef habitat characterization and assessments (NCCOS)
 - water quality and sediments core sampling
- ◆ NRCS efforts:
 - restoration of irrigation systems, creating 3 reservoirs, and 2 sediment basins, among other measures
 - stabilization along the river banks of Río Loco
 - encouraging conversion from conventional coffee plantations to shade trees.

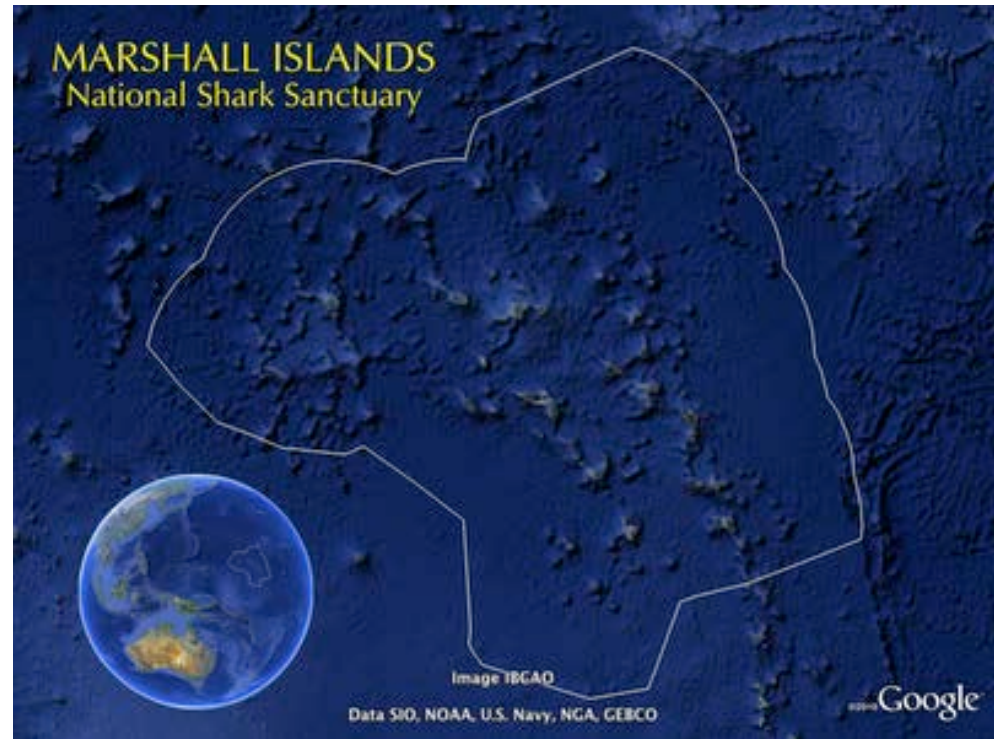
Puerto Rico

- Large-scale surveys were conducted for Elkhorn coral (*Acropora palmata*) utilizing a random sampling approach at six sites (3 east and 3 west coast MPAs).
- Three MPAs sites (La Cordillera Reefs and Tourmaline Reefs Natural Reserves and Tres Palmas Marine Reserve) monitored regularly since 2007 using the NOAA demographic protocol.
- Coral restoration: Over 20,000 corals salvaged and reattached, including listed species, with over 90% survival rate.



Republic of the Marshall Islands (RMI)

- World's largest shark sanctuary (768,547 square miles).
- Fines up to \$200,000.
- Coral Monitoring data training
- Continuation of the Reimaanlok process



RMI

- ◆ Sea cucumber moratorium and national management plan under development.
- ◆ Climate change adaptation workshop
- ◆ Continuation of the marine conservation certificate program.
- ◆ Coral surveys and data on Majuro and Rongelap.



U.S. Virgin Islands



- ◆ Installation of St. Croix East End Marine Park marker buoys – rules & regulations enforceable



- Identification and prioritization of reef restoration sites for out-planting of >3000 *Acropora* fragments
- Continued removal of invasive lionfish & adapting management strategies

- St. Croix East End Watershed Plan
- Erosion and sedimentation BMP installation



Recommendations

- ◆ Request USCRTF letters of support for:
 - ◆ Micronesia Regional Shark Sanctuary
 - ◆ Caribbean Challenge
 - ◆ U.S./Hawaii Bid for 2016 IUCN World Conservation Congress.
- ◆ USCRTF accept the nomination of Nu'uuli Watershed from American Samoa for the Watershed Partnership.
- ◆ Guam requests the USCRTF review the Guam military build-up and encourages members to identify ways in which they can assist in addressing coral reef issues.

Recommendations

- USCRTF approve the newly redesigned Governor Sunia Summer Scholarships in 2012 and encourage full engagement of federal members in the program.
- The AIC is aware of the importance of outputs to meet CRCP goals and objectives, however wish to re-emphasize the need to focus on outcomes to meet stakeholders expectations.

www.allislandcorals.org

